

'Black pattern' lanterns



Baroque-style patterns for a romantic atmosphere

Why not make decorations for your living room or your the garden party you hold yourself? These flickering lanterns look particularly attractive when night begins to fall. And provide a perfect setting for a warm summer evening with friends. Whether at home or in the garden, you're guaranteed a wonderfully cosy atmosphere with these trendy lights in 'black and white'.



FIMO shopping / material list



Black Pattern Lanterns

space for your notes

Make sure that the glasses are big enough to arrange the patterns on.

You will need these STAEDTLER articles:

product	colour	art. no.	quantity	✓
FIMO effect	translucent	8020-014	4	
FIMO soft	black	8020-9	4	
acrylic roller	--	8700 05	1	
or Clay machine	--	8713	1	
Modelling tools	--	8711	1	

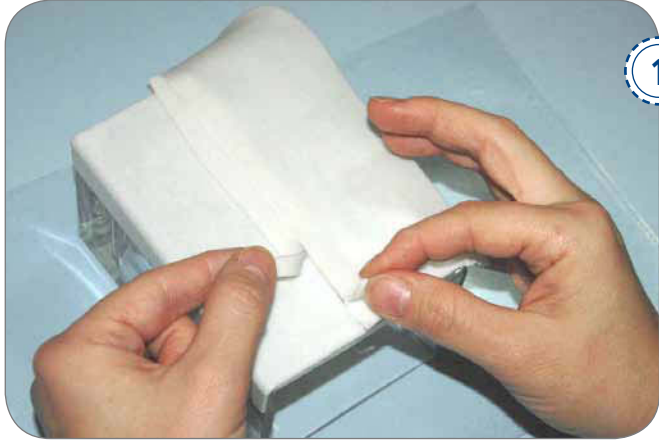
You will also require: 2-3 different-sized glasses, a pencil, craft knife with a sharp point, some transparent sleeves, pattern sheet (included at the end of these instructions)



You can find our products in well-stocked sales outlets. Should you have any queries, please call our hotline: +49 (0)911 9365-888.

Have fun crafting!

Instructions for the 'black pattern' lanterns



Use the pasta machine to make uniform, thin sheets out of the translucent FIMO and cover the glass with them. Because the light needs to be able to shine through the finished lantern, the layer of FIMO must not be too thick and the edges must not overlap.

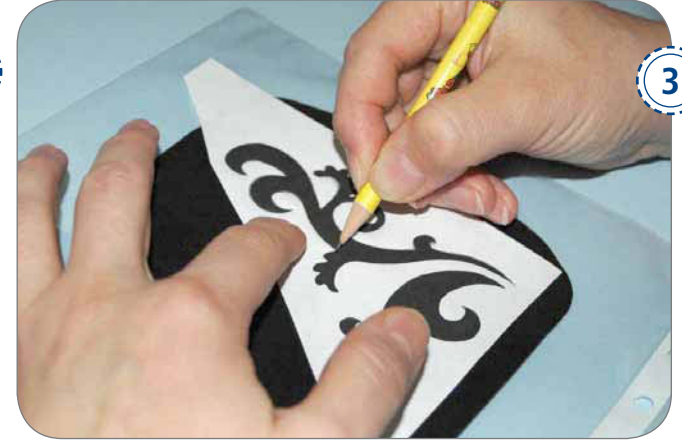
The best way to join the sheets without leaving a seam is to allow the edges to overlap first and then cut through both layers in the middle. Then remove the two smaller, surplus pieces and smooth over the gap carefully with your finger.



It is a good idea to make several copies of the pattern sheet and then cut out the individual patterns.

Arrange the paper patterns on your glass. Try out different positions to see how they look best.

Take care when doing this, that you don't damage the soft, translucent FIMO surface!



Use one of the transparent sleeves as a work surface. Roll out a sheet of black FIMO using the clay machine and place the paper patterns on top. Bear in mind that when you transfer the pattern from the film to the glass later on, it will be inverted.

You should therefore use the pattern back-to-front. Now go around the edges using a pencil to transfer the lines onto the FIMO.

Instructions for the 'black pattern' lanterns



Cut the pattern out along the lines that you have drawn using a knife. Remove any excess FIMO and leave the pattern on the film. Smooth off the edges and round off the curves using a modelling stick.



Take the film – with your pattern still on it – and place it on the glass which you wrapped in translucent FIMO earlier on.

Press the black FIMO on gently and carefully remove the film.



Press the patterns on a little firmer using your fingers and smooth over the surface. Once again, you can carefully smooth over any edges, bumps or dents using a modelling stick.

Instructions for the 'black pattern' lanterns



Finally, place your finished lantern in the oven for 30 minutes at 110 °C to harden.

That's it – your trendy, unique lantern is finished! It's sure to attract plenty of attention – especially when you tell everyone that you made it yourself!



'Black pattern' lanterns

